



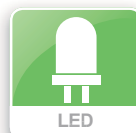
www.gdsdoors.eu



Evolution

Next generation openers by

LiftMaster®





LiftMaster

Worldwide Number One

As a leading provider of convenience and security products for homes & businesses worldwide, LiftMaster's strong foundation emanates from the millions of products manufactured and sold since the early 1960s. Around the world, there are more LiftMaster openers installed than any other brand.

Evolution

Meaningful Innovation is the buzz word that triggered the development of Evolution. Evolution – what started being an internal project name for the new generation of garage door openers – evolved into an exciting new endeavor with one clear priority: listen to the Voice of the Customer in order to design products that make their lives easier.



Design meets technology.

The state-of-the-art design of the new Evolution line is the winner of a consumer design study. Ten design concepts were presented to over 1,000 consumers in five different countries in Europe.

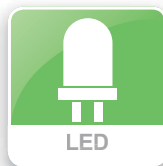
The state-of-the-art technology of the new Evolution line is the combination of a new logic and energy efficiency. Evolution garage door openers are equipped with the best radio performance ever.

In short: The best radio performance ever and more importantly: the myQ technology.

Sustainability, innovation and design are supported by an increased travel speed, a fine set of accessories and warranty periods up to 7 years on the drive motor. This combination is second to none and will provide the user with the great experience one can expect from a world market leader.



myQ – provides revolutionary technology for garage door automation ... and beyond. myQ will make life easier as it allows monitoring and controlling the garage door from anywhere in the world by smart phone, tablet or computer.



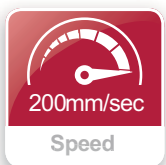
Permanent lighting – long lasting LEDs (up to 50,000 hours of service), no warm up phase, so the light is bright immediately. Significantly lower CO₂ emissions and no heavy metal or mercury in the production process.



Sustainability – the low standby power consumption corresponds to savings of up to £230 over the life of the opener compared to the majority of garage door openers that are installed around the world.



Warranty – we have also increased the warranty period to a maximum of 7 years (LM100EV) to demonstrate that LiftMaster provides premium quality products.



Speed – we have accelerated the speed of our operators to a maximum travel speed of 200 mm/sec for the LM80 and LM100 without having to pay a premium for this important distinguishing feature.



Ease of installation – the new Evolution range is so easy to install that it saves up to 30% of installation time.

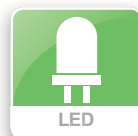
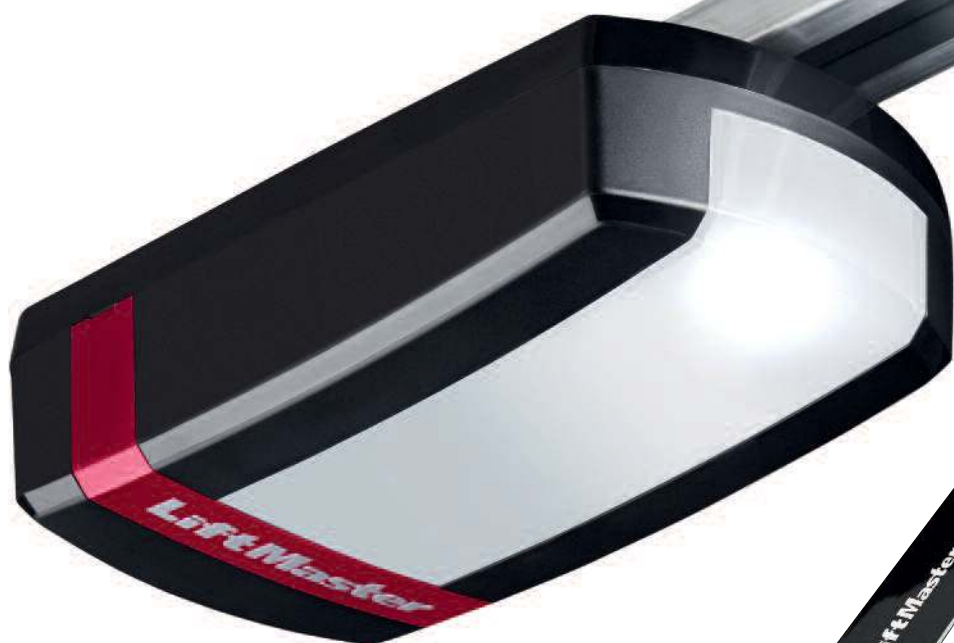


Whisper Quiet – the quiet and smooth operation provided by the belt drive system is second to none – try it out!



Evolution Radio – Evolution garage door openers are equipped with the best radio performance ever – not only does it provide bi-directional radio – which means: your garage door opener does not only receive signals, but also sends signals back.

LM100 EVO



LM100 EVO KEY DETAILS



Door Operation

Transmitters	Two 4-Button Mini Transmitters with sliding cover, 868 MHz, LED battery indicator.
Wall Station	Two button wireless control station to operate up to two doors.
Radio	Built-in Tri-Band 868 MHz and 433 MHz receiver.
myQ Technology	Patented two-way communication system enables you to monitor and control your door from anywhere in the world via the optional myQ internet gateway.
Security	Opener acts as a positive lock on your door.

Convenience Features

Courtesy Light	LED lighting rated to over 20 years of normal service. Automatically turns off 2.5 minutes after door closing.
Door Travel	Soft-start and soft-close, 200mm per second.
Internal Disconnect	Convenient pull cord to disconnect the door drive allowing manual operation of the door in case of power cut. Optional external disconnect available.

Technical Details

Maximum Pull Force	1,000 Newton.
Maximum Door Dimensions	130 Kg, 2.25m (7'5") high as standard, up to 4m (13') with optional rail.
Drive Type	Maintenance-Free, 24 Volt DC, permanent lubrication motor gear.
Safety Reverse System	Optical detection of speed and door position. Automatically reverses upon meeting an obstruction.
Rail Type	Maintenance-Free, one piece steel rail with steel reinforced drive belt.

Optional Equipment

Please see pages 8-10 of this brochure.

Warranty

Seven year drive motor warranty. Please see warranty sheet for full details.



LM80 EVO KEY DETAILS



Door Operation

Transmitters	Two 2-Button Mini Transmitters with sliding cover, 868 MHz, LED battery indicator.
Wall Station	Two button wireless control station to operate up to two doors.
Radio	Built-in Tri-Band 868 MHz and 433 MHz receiver.
myQ Technology	Patented two-way communication system enables you to monitor and control your door from anywhere in the world via the optional myQ internet gateway.
Security	Opener acts as a positive lock on your door.

Convenience Features

Courtesy Light	LED lighting rated to over 20 years of normal service. Automatically turns off 2.5 minutes after door closing.
Door Travel	Soft-start and soft-close, 200mm per second.
Internal Disconnect	Convenient pull cord to disconnect the door drive allowing manual operation of the door in case of power cut. Optional external disconnect available.

Technical Details

Maximum Pull Force	800 Newton.
Maximum Door Dimensions	110 Kg, 2.25m (7'5") high as standard, up to 3m (10') with optional rail.
Drive Type	Maintenance-Free, 24 Volt DC, permanent lubrication motor gear.
Safety Reverse System	Optical detection of speed and door position. Automatically reverses upon meeting an obstruction.
Rail Type	Maintenance-Free, one piece steel rail with steel reinforced drive belt.

Optional Equipment Please see pages 8-10 of this brochure.

Warranty Five year drive motor warranty. Please see warranty sheet for full details.

LM60 EVO



LM60 EVO KEY DETAILS



Door Operation

Transmitters	Two 2-Button Mini Transmitters with sliding cover, 868 MHz, LED battery indicator.
Wall Station	Two button wireless control station to operate up to two doors.
Radio	Built-in Tri-Band 868 MHz and 433 MHz receiver.
myQ Technology	Patented two-way communication system enables you to monitor and control your door from anywhere in the world via the optional myQ internet gateway.
Security	Opener acts as a positive lock on your door.

Convenience Features

Courtesy Light	LED lighting rated to over 20 years of normal service. Automatically turns off 2.5 minutes after door closing.
Door Travel	Soft-start and soft-close, 180mm per second.
Internal Disconnect	Convenient pull cord to disconnect the door drive allowing manual operation of the door in case of power cut. Optional external disconnect available.

Technical Details

Maximum Pull Force	600 Newton.
Maximum Door Dimensions	90 Kg, 2.25m (7'5") high as standard, up to 2.44m (8') with optional rail.
Drive Type	Maintenance-Free, 24 Volt DC, permanent lubrication motor gear.
Safety Reverse System	Optical detection of speed and door position. Automatically reverses upon meeting an obstruction.
Rail Type	Maintenance-Free, one piece steel rail with steel reinforced drive belt.

Optional Equipment

Please see pages 8-10 of this brochure.

Warranty

Four year drive motor drive motor warranty. Please see warranty sheet for full details.

RDO 800 KEY DETAILS



Door Operation

Transmitters	Two 3-Button Mini Transmitters 433 MHz rolling code super-heterodyne
Wall Station	Two button wireless control station to operate up to two doors.
Security	Opener acts as a positive lock on door

Convenience Features

Courtesy Light	LED lighting rated to over 20 years of normal service. Automatically turns off 3 minutes after door closing.
Door Travel	Soft-start and soft-close, automatic close (requires optional infra-red safety reverse system).
Internal Disconnect	Convenient pull cord to disconnect the door drive allowing manual operation of the door in case of power cut. Optional external disconnect available.

Technical Details

Maximum Pull Force	550 Newton
Maximum Door Weight	100 Kg
Maximum Door Size	12m ²
Drive Type	Direct drive maintenance-free, 24 Volt DC, permanent lubrication motor gear
Safety Reverse System	Optical detection of speed and door position. Automatically reverses upon meeting an obstruction.
Maximum Travel Rate	180mm per second

Warranty	Three year drive motor warranty against manufacturing defects. Please see warranty sheet for full details.
-----------------	--

RDO800



3800E KEY DETAILS



Door Operation

Transmitters	Two 3-Button Mini Transmitters 433 MHz rolling code super-heterodyne.
Wall Station	Two button wireless control station to operate up to two doors.
Security	Electronic slide lock with manual override.

Convenience Features

Door Travel	Soft-start and soft-close, automatic close (requires optional infra-red safety reverse system).
Internal Disconnect	Convenient pull cord to disconnect the door drive allowing manual operation of the door in case of power cut. Optional external disconnect available.

Technical Details

Maximum Pull Force	800 Newton
Maximum Door Weight	130 Kg
Maximum Door Size	18m ²
Drive Type	Direct drive maintenance-free, 24 Volt DC, permanent lubrication motor gear
Safety Reverse System	Optical detection of speed and door position. Automatically reverses upon meeting an obstruction.
Maximum Travel Rate	180mm per second

Warranty	Three year drive motor warranty against manufacturing defects. Please see warranty sheet for full details.
-----------------	--

3800E



Please note RDO 800 and 3800E openers are not myQ compatible.

Convenience accessories.



myQ kit

Internet Gateway 828EV plus 770E Protector System™

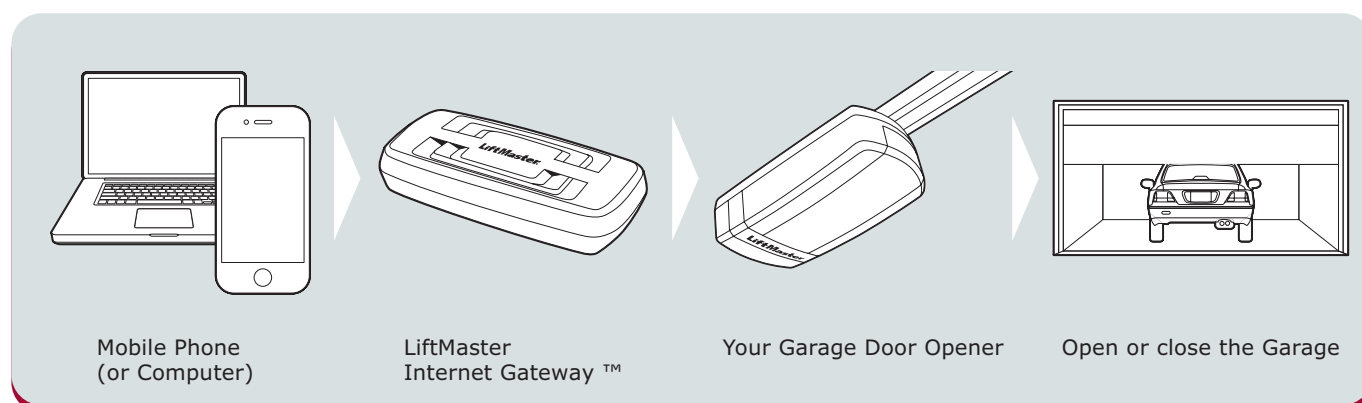
Revolutionary new accessory with built-in myQ technology that connects to the internet and allows monitoring and operating the garage door opener in or around your home or from anywhere in the world by using a smartphone or a computer. It utilizes a two-way communication system. Easy and fast installation through in-home router. No annual activation fee.

Compatible with the following LiftMaster products: LM60 EVO, LM80 EVO and LM100 EVO, not compatible with RDO 800 or 3800E.



As your opener can be operated out of your sight EU law requires the additional safety of the infra-red safety system.

MyQ – How IT WORKS



Wireless Keypad 747EV

Open or close your garage door without using a remote control or key. The LiftMaster Wireless Keyless Entry System can open the door using a private 4-digit code. Allows temporary access codes for visitors. Completely wireless, powered by one 9-volt battery (included). Weatherproof flip-up protective cover. Backlit keypad makes numbers easy to see, even in the dark.



Garage Door Monitor 829EV

myQ enabled technology allows monitoring and closing up to four garage doors from any room in the house. Green and red LEDs indicate whether the garage door is open or closed. Volume-controlled audible alert when the garage door is being opened. Fast, easy installation. Compatible with LiftMaster Evolution garage door openers (models LM60EV, LM80EV, LM100EV).



Wireless Wall Control 128EV

2 channels, elegant design, easy to install, operates on 433 MHz.

myQ kit required to use this accessory.



Infra-red safety reversing system.

In order to be compliant with current EU regulations, IR sensors must be installed in order to use myQ enabled accessories. The Garage Door Monitor 829EV as well as the Internet Gateway 828EV require IR sensors as supplied in the myQ kit.



The Protector System™ failsafe infra-red sensor system 770E

- For use with all LiftMaster garage door openers.
- Red light LED indicates IR beam continuity.
- This is a non contact reversing system. When the IR beam is broken the door will stop and reverse.



Transmitters

Transmitters are one of the design highlights in the new Evolution program. The piano black color provides a very elegant accessory that one is proud to carry on the key chain. The sliding cover prevents unintended operation. LED light indicates battery life.



2-channel transmitter 868 MHz Rolling code TX2EV.

- Only for use with Evolution models.



4-channel transmitter 868 MHz Rolling code TX4EV.

- Only for use with Evolution models.



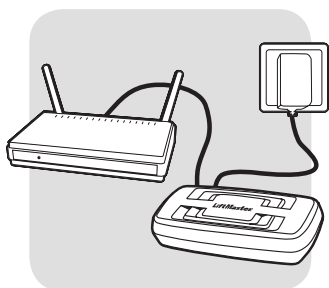
Universal 4-channel transmitter 433 MHz Rolling code TX4UNI

The TX4UNI universal transmitter can be used with the all Evolution openers as well as with any LiftMaster operator since 2003. The universal transmitter has a white LED and operates on 433 MHz. It can replace all 433 MHz transmitters (94330E, 94333E, 94335E, 94334E as well as 4330E, 4333E, 4335E).

How to set-up myQ.



Please scan code to see our myQ set-up video



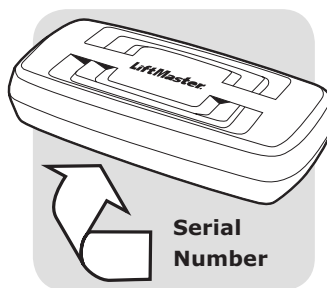
1. Connect:

Connect the provided ethernet cable to router. Use the plug valid for your country (not all models). Connect power to the internet gateway. When the internet gateway connects to the internet the green light will stop blinking and will light solid.



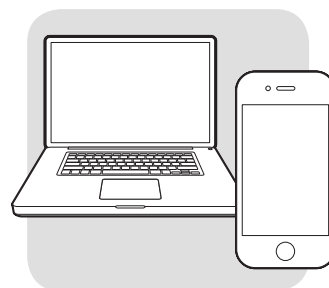
2. Create an account:

Visit www.myliftmaster.eu to create an account. If you already have an account, use your login and password.



3. Register gateway:

Enter the Serial Number from the GATEWAY (see label on the bottom of the Internet Gateway)

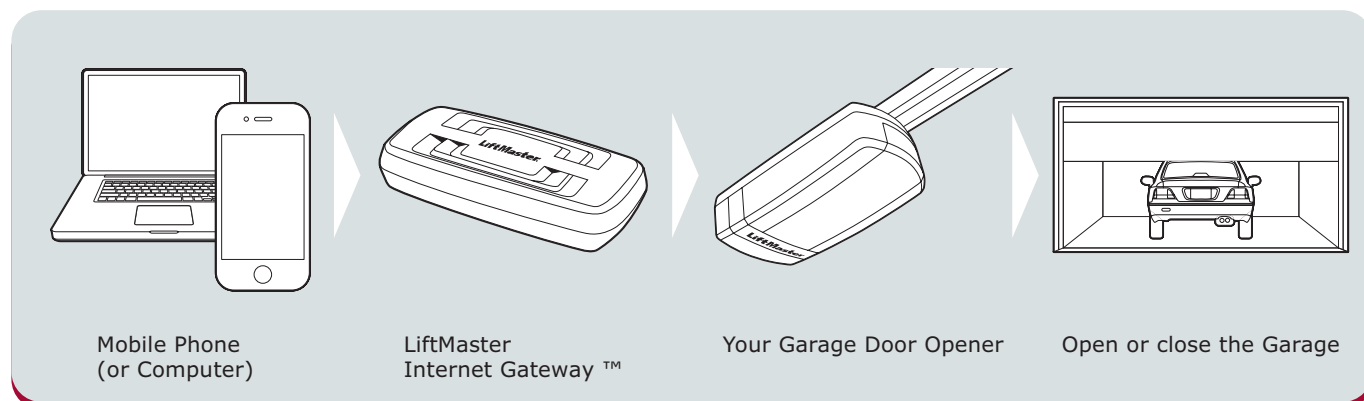


4. Add myQ Devices:

Use an Internet enabled computer or smartphone to add devices. After you add a device, the blue light on the internet gateway will appear and stay on.

For smartphones: Apps can be downloaded free of charge.

MyQ – How IT WORKS



LiftMaster product range feature matrix.

MODEL:	LM100EVO	LM80EVO	LM60EVO	RD0800	3800E
Type	Drawbar	Drawbar	Drawbar	Roller Door	Jackshaft
Compatible doors:	Sectional/ Up & Over	Sectional/ Up & Over	Sectional/ Up & Over	1-Skin Roller	High Lift Sectional
CE Certification: General	German TUV tested to meet EN12453 and all other EU/UK requirements				
Pulling force	1000N	800N	600N	550N	800N
Motor	24v DC	24v DC	24v DC	24v DC	24v DC
Opening speed	200mm/ second	200mm/s econd	180mm/ second	180mm/ second	180mm/ second
Noise level	54 dB	54 dB	54 dB	62 dB	62 dB
Standby power	0.8W	0.8W	0.8W	2W	2W
Lighting	LED	LED	LED	LED	N/A
Force sensing	Yes	Yes	Yes	Yes	Yes
Soft-start/soft-stop	Yes	Yes	Yes	Yes	Yes
Limit Setting	Auto/Manual	Auto/Manual	Auto/Manual	Auto/Manual	Auto/Manual
Drive	Belt	Belt	Belt	Direct Drive	Direct Drive
Rail	1 or 3-Piece	1 or 3-Piece	1 or 3-Piece	N/A	N/A
Radio System myQ	Enabled, only works with gateway 828EVO (Optional)			N/A	N/A
Receiver type	Dual Frequency 6-Band	Dual Frequency 6-Band	Dual Frequency 6-Band	Super- heterodyne	Super- heterodyne
Radio Frequency	868/433 MHz	868/433 MHz	868/433 MHz	433.9 MHz	433.9 MHz
Memory Registers	180	180	180	32	32
Code type	Bi-directional scanning	Bi-directional scanning	Bi-directional scanning	Rolling	Rolling
Remote controls	2 x 4 Channel Mini	2 x 2 Channel Mini	2 x 2 Channel Mini	2 x 3 Channel Mini	2 x 3 Channel Mini
Wall control	Wireless: 2 Channel	Wireless: 2 Channel	Wireless: 2 Channel	Wireless: 2 Channel	Wireless: 2 Channel
Rated door area	13.5m2	13.5m2	10.7 m2	12m2	18m2
Rated door weight	130Kg	110Kg	90Kg	100Kg	130Kg
Minimum headroom	30mm	30mm	30mm	355mm	480mm
Maximum door height	4000mm	3000mm	2500mm	3500mm	3658mm
Overall opener length* for doors up to 7'6" (2286mm) high	10'6" (3200mm)	10'6" (3200mm)	10'6" (3200mm)	N/A	N/A

This is the standard "Out of the box" dimension. We can supply openers for doors up to 4000mm high and all rails can be cut down.



Please scan the QR
code to visit the
Garage Door
Systems website

Liftmaster by Chamberlain design and innovation centre.



Wakehurst Industrial Estate
Wakehurst Road
Ballymena, BT42 3AZ

(NI) t. 028 2565 5555 f. 028 2564 4030
(UK) t. 0870 242 3 242 f. 0800 085 2 741
(RoI) t. 1850 510 510 f. +44 28 2564 4030

www.gdsdoors.eu



AUTHORISED SPECIALIST